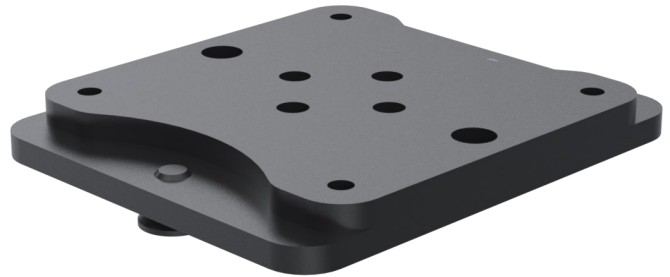


SPTPC401

SpacePole TabPrint Curve - Flat mount for TabPrint



Product Specifications

Main material	Metal
Product Version	1.0
Colour Name	Black, grey, white
Height adjustable?	No
Lock Type	Screws
Mounting	DuraTilt with MultiGrip
Mounting Type	Counter
Unit Depth	60 mm
Unit Height	8.5 mm
Unit Width	50 mm
Unit Weight	0.11 kg
Units per Box	1
Box Depth	110 mm
Box Height	63 mm
Box Width	59 mm
Box Weight	0.12 kg
Warranty	5 Years